

Paleogene and Neogene (T10–T40)

Sandstone and mudstone

Limestone

Cretaceous (K10–K60)

Fluvio-deltaic to shallow marine sandstone and mudstone

Marine mudstone

Submarine fan sandstone and mudstone

Jurassic (J20–J50)

Fluvio-deltaic to shallow marine sandstone and mudstone

Triassic to lower Jurassic (TR10–J10)

Undifferentiated sandstone, mudstone and limestone

Permian

Undifferentiated sandstone, mudstone and limestone

Proterozoic

Undifferentiated Kimberly Basin

Fault

Hydrocarbon plays

1 Jurassic–earliest Cretaceous extension fault blocks and rollover anticlines within inversion-related structural highs
e.g. Brewster 1, Brecknock 1, Buccaneer 1, Crux 1, Yampi 1

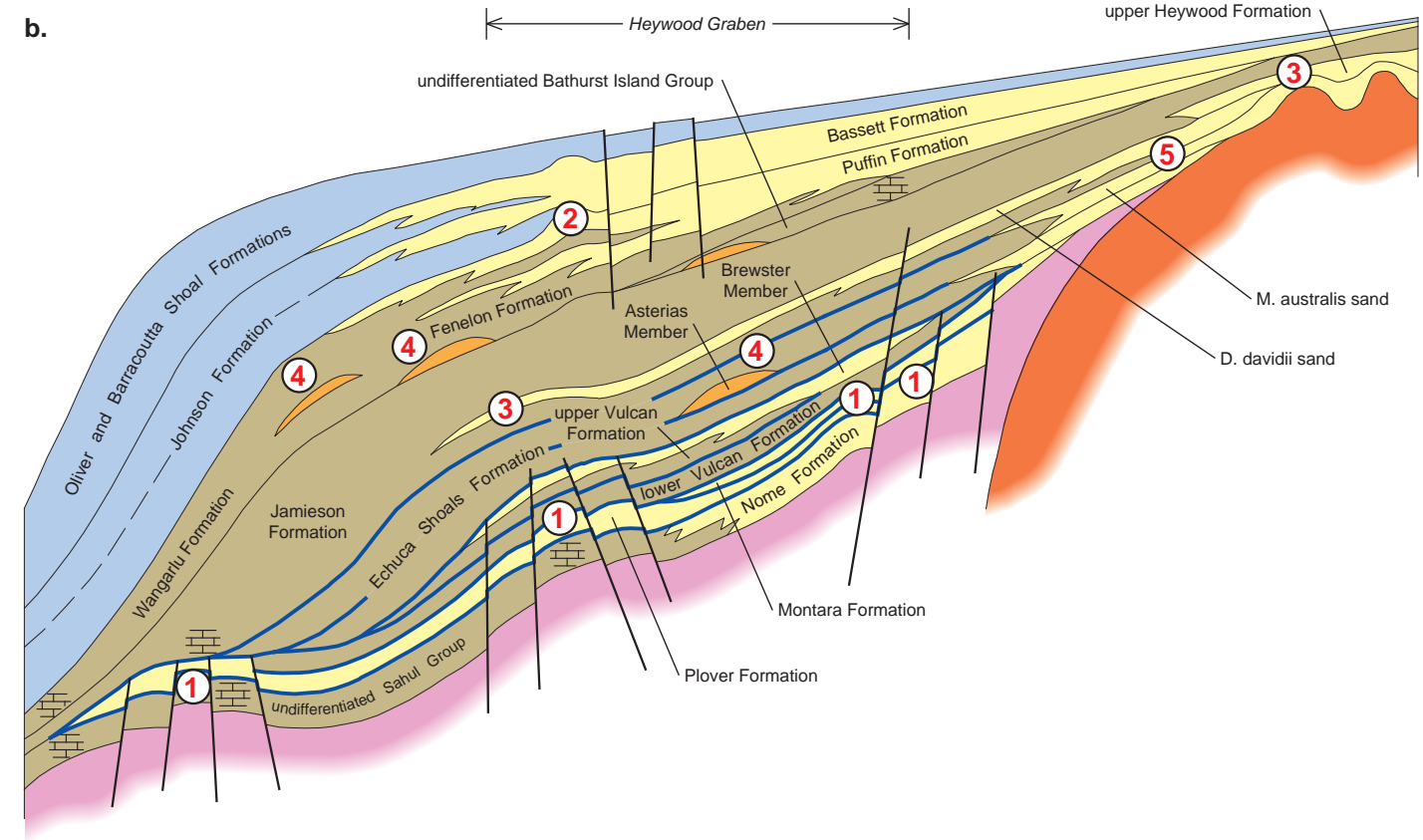
2 Miocene inversion anticlines e.g. Bassett 1A, Lyhner 1

3 "Drape" folds e.g. Caswell 2 ST2, Focus 1, Psepotus 1, Kalyptea 1 ST1, Asterias 1 ST1

4 Submarine fan sandstone and mudstone e.g. Asterias 1A, Bassett 1A, Discorbis 1, Carbine 1, Braveheart 1

5 Stratigraphic pinch-out associated with onlap e.g. Cornea 1

Conceptual digram



Limestone

Submarine fan sandstone and mudstone

Fluvio-deltaic, shallow marine sandstone and mudstone

Marine mudstone

Undifferentiated Permian sandstone, mudstone and limestone

Basement

Marl and calcareous mudstone

Potential source rock

Fault

Hydrocarbon plays

1 Jurassic–earliest Cretaceous extension fault blocks and rollover anticlines within inversion-related structural highs
e.g. Brewster 1, Brecknock 1, Buccaneer 1, Crux 1, Yampi 1

2 Miocene inversion anticlines e.g. Bassett 1A, Lyhner 1

3 "Drape" folds e.g. Caswell 2 ST2, Focus 1, Psepotus 1, Kalyptea 1 ST1, Asterias 1 ST1

4 Submarine fan sandstone and mudstone e.g. Asterias 1A, Bassett 1A, Discorbis 1, Carbine 1, Braveheart 1

5 Stratigraphic pinch-out associated with onlap e.g. Cornea 1